



CROWNE PLAZA[®]

MARLOW

WELCOME

CROWNE PLAZA MARLOW

Welcome to the exceptional
AA Rosette-awarded
Crowne Plaza Marlow Hotel & Spa.

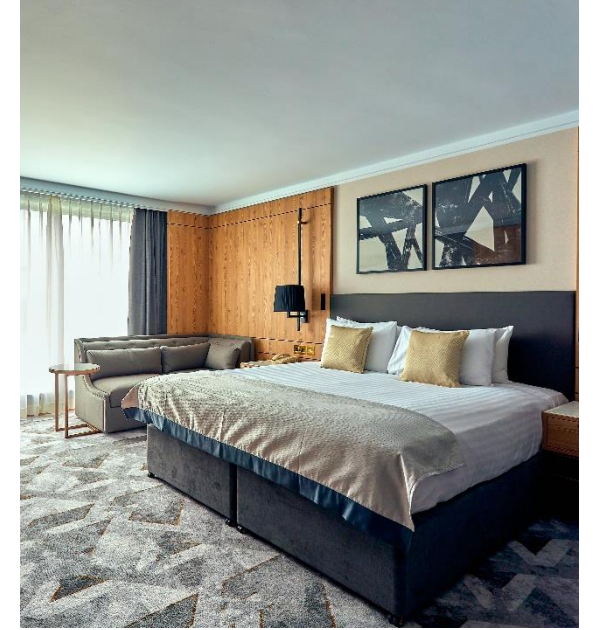
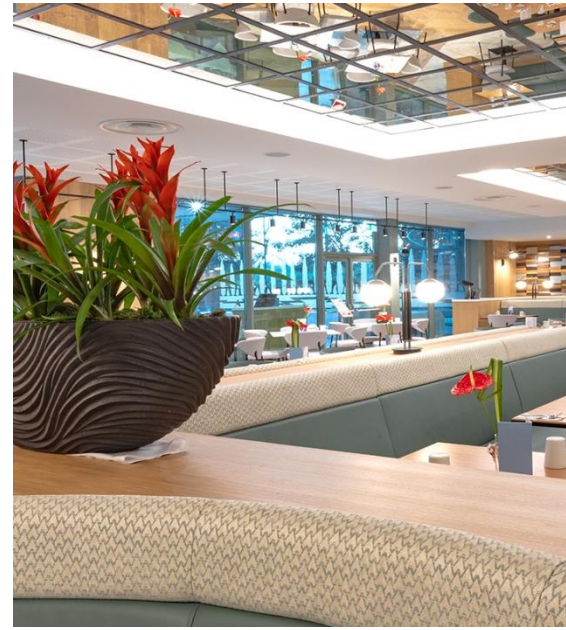
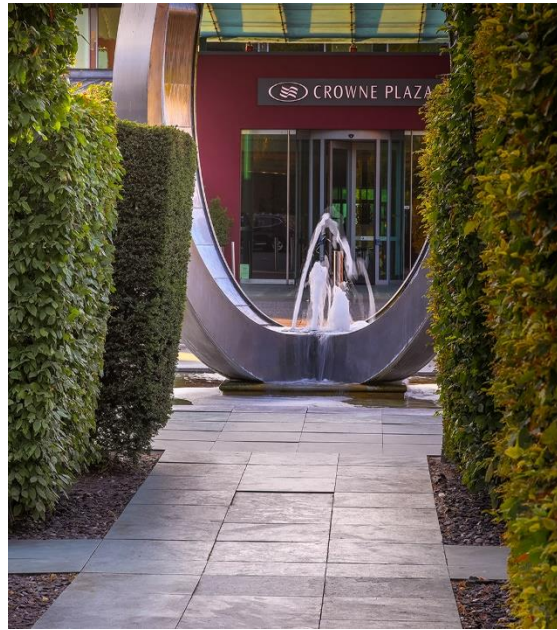
We are delighted to have now completed our extensive multi-million-pound refurbishment of the entire hotel, which has transformed the property into that of the ultimate luxury.

Guests will notice an entire upgrade to the hotel's interior design, which reflects a stylish, contemporary look and feel to suit both the business and leisure traveller.

T : 01628 496 800 E : reservations@cpmarlow.co.uk

W : www.cpmarlow.co.uk

A : Fieldhouse Lane, Marlow, SL7 1GJ





CROWNE PLAZA
HOTELS & RESORTS

© 2023 INTERCONTINENTAL HOTELS GROUP

HOTEL LOBBY - CROWNE PLAZA MARLOW



AQUA BAR & LOUNGE

Our stylish Aqua Bar & Lounge & is ideal for informal meetings or simply relaxing and enjoying a drink. From light bites, to cocktails and afternoon teas.

With its floor to ceiling windows overlooking the stunning lake and Aqua Bar provides the perfect setting for meetings with friends or colleagues. You can enjoy the individual British classics, as well as a spicy authentic Indian Menu for the more adventurous.



CROWNE PLAZA[®]
MARLOW

T : 01628 496 800 W : www.cpmarlow.co.uk

E : reservations@cpmarlow.co.uk

W : Fieldhouse Lane, Marlow, SL7 1GJ

AQUA BAR - CROWNE PLAZA MARLOW



CROWNE PLAZA
HOTELS & RESORTS

© 2023 INTERCONTINENTAL HOTELS GROUP

AQUA BAR - CROWNE PLAZA MARLOW



GLAZE RESTAURANT- CROWNE PLAZA MARLOW



GLAZE RESTAURANT

The AA Rosette awarded Glaze Restaurant sits within the newly refurbished Crowne Plaza Marlow. Find a spot in the comfortable Restaurant, Bar or out in the Conservatory with stunning lake views, and choose from an extensive array of drinks whilst admiring the views through floor to ceiling windows.

Our creative menus include exceptional modern British cuisine as well as an extensive authentic Indian menu. Desserts prepared by our Head Pastry Chef are a real highlight, and you'll always find a favourite on the list.



T : 01628 496800 W : www.cpmarlow.co.uk

E : fbops@cpmarlow.co.uk

A : Fieldhouse Lane, Marlow, SL7 1GJ



CROWNE PLAZA
HOTELS & RESORTS

© 2023 INTERCONTINENTAL HOTELS GROUP

CONSERVATORY - CROWNE PLAZA MARLOW



Conservatory

The Conservatory is situated on the ground floor, opening onto the Hotel's landscaped gardens making it an ideal venue for weddings, large scale conferences and special events.

The Conservatory is available for either private or semi-private functions.

The Afternoon Teas are simply the best in Buckinghamshire

Terrace Dining

Adjacent to the newly refurbished Aqua Bar & Conservatory, the outdoor Terrace is the perfect location for breakfast, lunch or dinner, as well as special occasion, with conveniently combined indoor and outdoor space that can be privatised for your event.

So whether it's a cocktail or two with friends, a romantic sunset dinner, a BBQ feast, or a business lunch with colleagues, the terrace at Crowne Plaza Marlow is the perfect location to enjoy culinary delights during the warmer weather.

T : 01628 496 800 W : www.cpmarlow.co.uk

E : fbops@cpmarlow.co.uk

A : Fieldhouse Lane, Marlow, SL7 1GJ





CROWNE PLAZA[®]
HOTELS & RESORTS

© 2023 INTERCONTINENTAL HOTELS GROUP

ACCOMMODATION - CROWNE PLAZA MARLOW

SLEEP ACCOMMODATION

Enjoy a relaxing overnight stay in one of our 168 brand-new spacious luxurious bedrooms, which offer 50" LED TV with HDMI connectivity, as well as new Respa King-size beds with luxury bedding.

All rooms benefit from a four piece en suite with separate walk in shower

Room Types	Number of Rooms
King Room	61
Superior Room	27
Twin Room	47
Standard Room	19
Double Accessible	8
Junior Suite	6

IHG[®] REWARDS

T : 016284 96800 W : www.cpmarlow.co.uk

E : reservations@cpmarlow.co.uk

A : Fieldhouse Lane, Marlow, SL7 1GJ

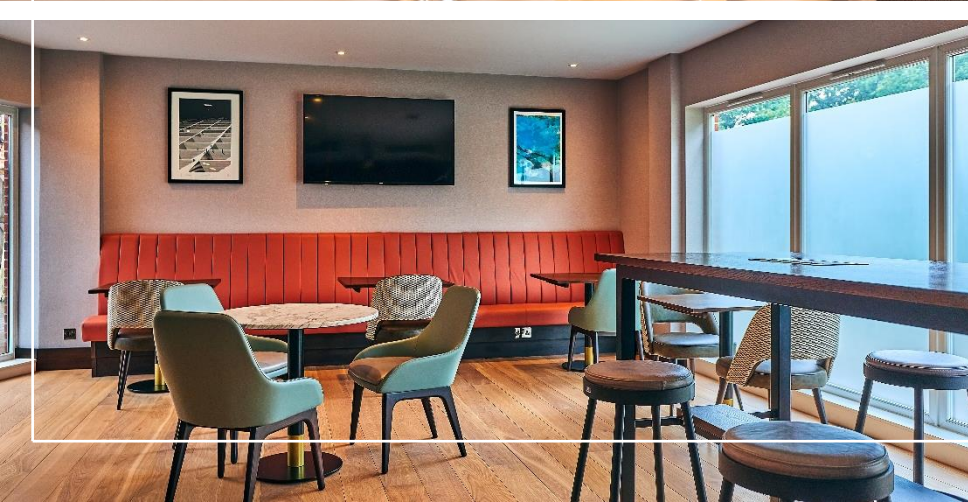





CROWNE PLAZA[®]
HOTELS & RESORTS

WINTERLAKE SUITE - CROWNE PLAZA MARLOW

© 2023 INTERCONTINENTAL HOTELS GROUP





MEETING & EVENTS CENTRE

11 new state of the art function suites

Capacity for up to 450 delegates in the Winterlake Suite with lake views

Creative Meeting Space with dedicated breakout room offering the latest technology including an all-in-one Samsung 75" E-Board Display Interactive Monitor featuring enhanced touch technology and UHD picture quality, with leverage heightened touch functionality for a smooth and versatile digital writing experience.

The Terrace Bar - An open and informal breakout area with comfortable seating and access to its own outdoor terrace.

The floor to ceiling glazing provides excellent natural daylight with views over Winter Hill. The breakout area can be used for both drinks, buffet lunches, small exhibitions, syndicate space or even informal meeting space. The area also benefits from having its own bar, lift, and washrooms.

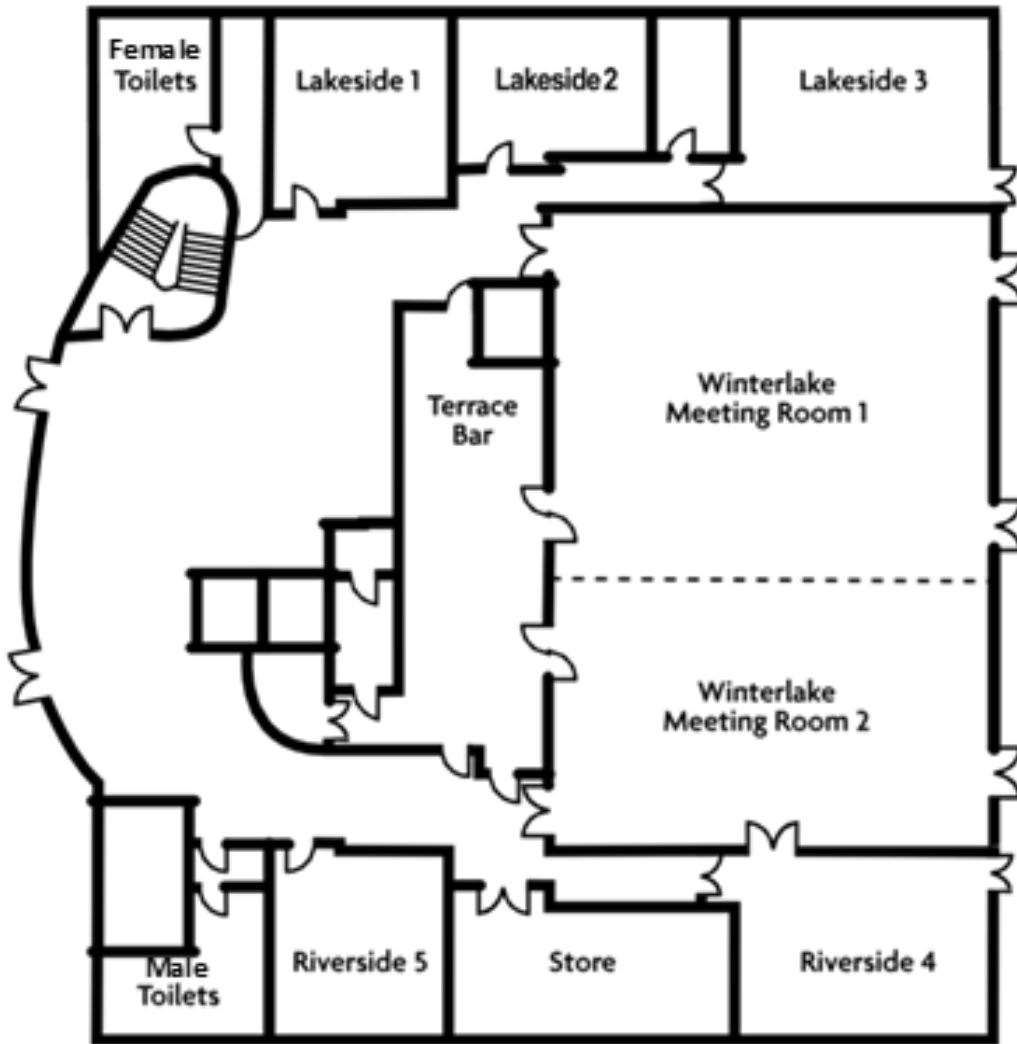


Meeting Rooms

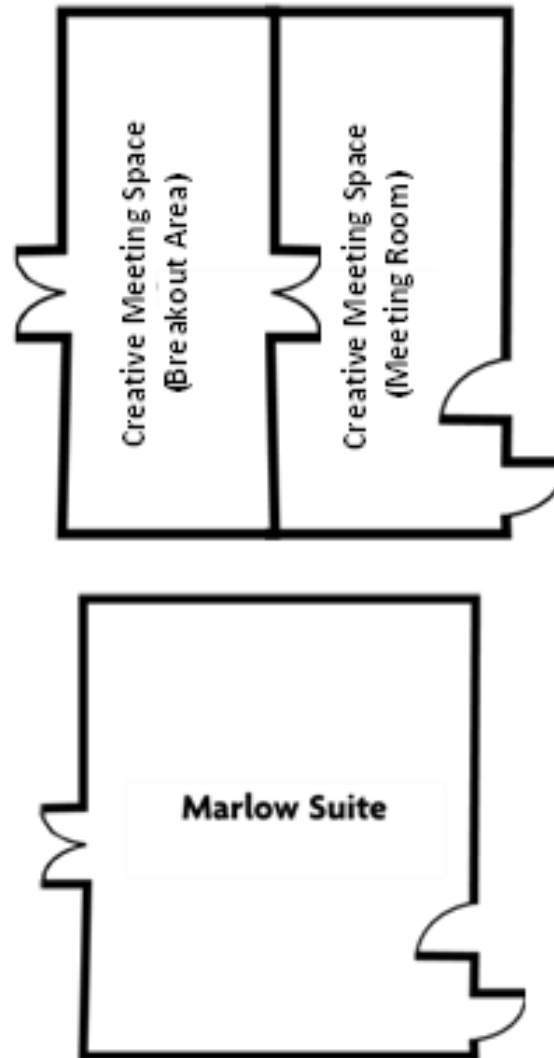
Meeting Room Capacity Chart

	LAKESIDE 1	LAKESIDE 2	LAKESIDE 3	RIVERSIDE 4	RIVERSIDE 5	WINTERLAKE	WINTERLAKE 1	WINTERLAKE 2	CREATIVE MEETING SPACE	MARLOW SUITE
(10) Banquet	30	20	40	40	30	300	170	130	40	30
Theatre	40	20	55	55	30	450	230	220	50	40
Classroom	18	12	24	36	20	180	120	60	27	18
Boardroom	22	10	26	26	12	-	76	76	22	22
Reception	50	30	60	60	50	400	160	110	50	50
Cabaret Back Projection	N/A	N/A	N/A	N/A	N/A	200	100	60	N/A	N/A
(8x) Cabaret Front Projection	24	16	32	32	24	240	136	104	32	24
U Shape	20	14	28	28	18	N/A	60	40	20	20
Dimensions (m)	6.6x6.8	7.3x4.9	9.4x7	9.5x7	8x6.5	23.6x16.3	16.3x13.7	16.3x10	(P) 7x8.4 (BO) 4.5x8.4	6.6x6.8
Area (m ²)	44.5	35.5	66	64	66	385	224	163	58.8 37.8	44.5
Ceiling Height (m)	3	3	3	3	3	3.8	3.8	3.8	2.3	2.3
Door Height (m)	2.9	2.6	2.7	2.9	2.7	2.7	2.7	2.7	1.7	1.7
Door Width (m)	0.9	0.8	1.4	0.8	1.4	1.8	1.8	1.8	2	0.8

First Floor



Ground Floor



THE EVENTS CENTRE
FLOORPLAN



T : 01628 496 818 W : www.cpmarlow.co.uk
E : events1@cpmarlow.co.uk
A : Fieldhouse Lane, Marlow, SL7 1GJ



MEETING & EVENTS

HYBRID MEETINGS

We've introduced the new normal with hybrid meeting and events solutions, incorporating live and virtual elements to allow for safe, socially distanced events, providing the latest technologies to suit your event requirements.

Easy, adaptable and bespoke solutions to suit your needs.

Connects both onsite attendees and virtual users.

Real-time Q&A and polling (onsite and remote)

Freedom to communicate from remote locations with your wider team

Contact-free content delivery using a file transfer protocol site

Two-way communication links between different meeting rooms

Live presentation from remote locations

Secure live stream to social media or company website



T : 0162 849 6818 W : www.cpmarlow.co.uk

E : events1@cpmarlow.co.uk

A : Fieldhouse Lane, Marlow, SL7 1GJ

WHY CHOOSE US

MEETING & EVENTS

4 Reasons to Meet at Crowne Plaza Hotels & Resorts



Crowne Plaza® Meetings Manager

A dedicated point of contact for your entire event. We handle the details so you can focus on the big picture.



Two-hour response guarantee on RFP's

Within two hours, we will respond to your request with space, rate and date availability.



Daily meetings debrief

We give you an itemized daily list of expenses so you can manage your budget effectively in real-time.

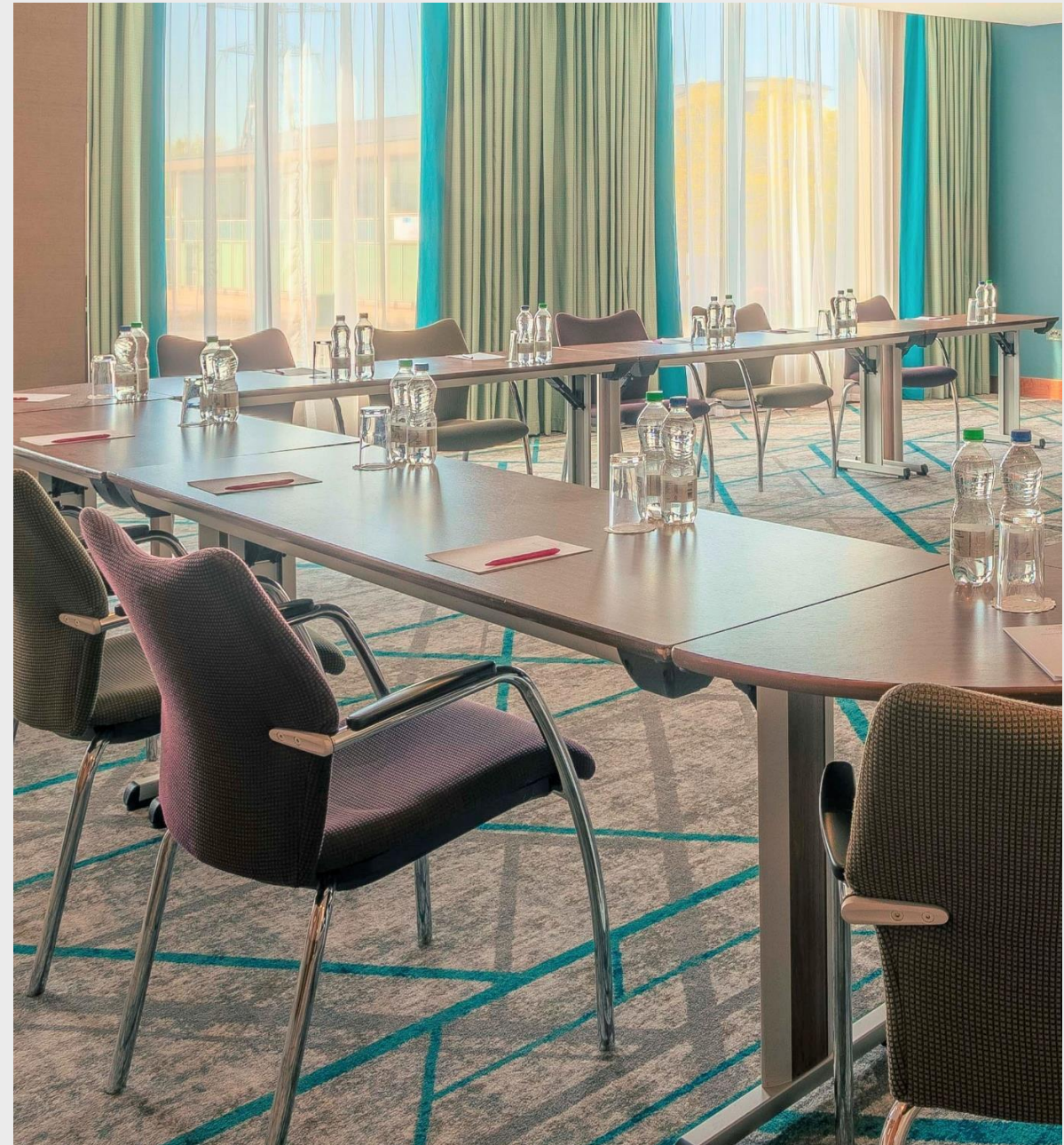


Meetings Service Excellence
Rated by planners as delivering high-quality meetings service and overall satisfaction.

**IHG® Business
Rewards**

IHG® business rewards is a new loyalty offering from IHG® rewards club that rewards individuals that book on behalf of others. Members earn IHG® rewards club points when placing their business accommodations, business meetings, and even social bookings such as wedding & birthday's.

No minimum threshold on qualified spend and you can earn points towards IHG® rewards club elite status, for you to enjoy during your personal stays





QUAD WELLNESS & SPA - CROWNE PLAZA MARLOW

QUAD WELLNESS & SPA HEALTH CLUB AND GYM

Relax and unwind with our extensive
.Quad Wellness & Spa centre.

19m Indoor Pool

Sauna, Indoor Jacuzzi & Steam Room

New air-conditioned gym with latest
“Life Fitness” equipment

Wide range of pampering Spa
Treatments to relax & unwind

Monthly membership from just £59

Corporate membership available

Free fitness classes for members
including Yoga, Pilates, Aqua,
Spin and Fitsteps



CROWNE PLAZA[®]
MARLOW

T : 0162 8496 800 W : www.cpmarlow.co.uk

E : quad.club@cpmarlow.co.uk

A : Fieldhouse Lane, Marlow, SL7 1GJ



CROWNE PLAZA[®]

HOTELS & RESORTS

© 2023 INTERCONTINENTAL HOTELS GROUP

QUAD WELLNESS & SPA - CROWNE PLAZA MARLOW



THE FACTS HOTEL OVERVIEW

Brand New Crowne Plaza Hotel & Spa

11 Meeting rooms with capacity for up to 450

Natural Daylight, latest Conference Technology

AA Rosette Awarded Glaze Restaurant

Al fresco dining on the terrace with lake views

300 car parking spaces and 2 coach
car parking spaces

Location close to key motorways & Train Station

Next to Marlow Train Station

20-minutes to LHR Airport

10-minutes from M4 & M40 Motorways

168 spacious brand-new bedrooms

Mindful Meetings policy

1 GBPS Dedicated Fibre line to the Hotel

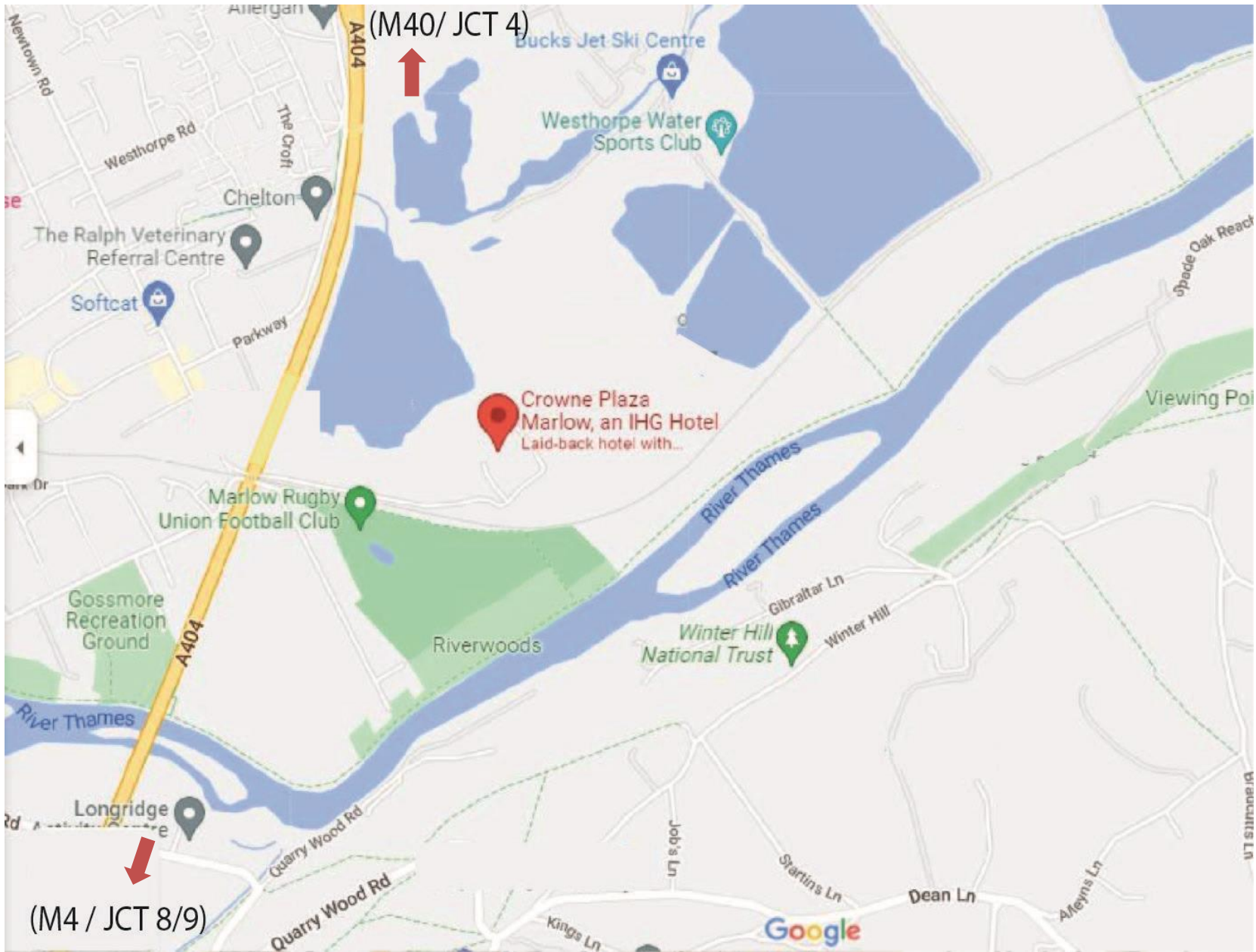


CROWNE PLAZA[®]
MARLOW

T : 01628 49 6800 W : www.cpmarlow.co.uk

E : reservations@cpmarlow.co.uk

A : Fieldhouse Lane, Marlow, SL7 1GJ



LOCATION / MAP

DIRECTIONS

Crowne Plaza Marlow
Fieldhouse Lane
Marlow
Bucks, SL7 1GJ
T: 01628 496 820

E : events@cpmarlow.co.uk
W : cpmarlow.co.uk

The hotel is located within walking distance of Marlow train station with excellent transport connections via the A404 and M4, M40 and M25 motorways.

Local attractions in proximity to the hotel include: Ascot Racecourse, Windsor Castle, Henly-On-Thames & Legoland.

High Wycombe – 5 miles
Maidenhead – 9 miles
Reading - 16 miles
Oxford – 29 miles

